

5-310-A Site Summary - Anaheim Bay (Seal Beach National Wildlife Refuge)**5-310-A****County:** Orange**ACP Division/Segment:** OR - A - S002**NOAA Chart:** 18749**Map Book:** 826 G5**Decimal Degrees:** 33.7313 -118.0811**Site Description:**

One of the most extensive and valuable wetlands in Orange County. Coastal lagoon, with extensive wetlands and marsh. Opening of bay has been channelized and lined with riprap, but inside bay past the Hwy1/Pacific Coast Highway bridge are extensive wetlands.

Resources at Risk:*ESI and Habitat:* 10A Salt - and brackish-water marshes

9A Sheltered tidal flats

6B Riprap

List of Resources at Risk:

	Resource Name	Status	Presence	Sensitivity
Birds	California least tern	FE, SE	Apr-Sep	
Birds	Western snowy plover	FT, SSC	Year-round	
Birds	California brown pelican	FP, SP	Jun-Oct	
Birds	Light-footed Ridgway's rail	FE, SE	Year-round	
Birds	peregrine falcon	FP, SP	Sep-Apr	
Birds	Belding's savannah sparrow	SE	Year-round	
Birds	black skimmer	FP, SSC	Apr-Oct	
Birds	waterfowl		Sep-May	
Birds	shorebirds		Year-round	
Birds	seabirds		Year-round	
Fish	juvenile fish		Year-round	
Plants	salt marsh bird's beak	FE, SE	Year-round	
Plants	eelgrass		Year-round	
Reptiles	green sea turtle	FT	Year-round	

FT-Federally Threatened, FE-Federally Endangered, FP-Federally Protected, SE-State Endangered, ST-State Threatened, SP -State Protected, SR-State Rare, SSC-Species of Special Concern, BGEPA-Bald and Golden Eagle Protection Act, SSSP-State Special Status Species

List of Key Contacts:

Type	Name/Title	Organization	Phone
C	/Coordinator	Native American Heritage Commission	(916) 373-3710
C	/	South Central Coast Information Center	(657) 278-5395
T	Hans Sin/California least tern Coordinator	California Department of Fish and Wildlife	(858) 539-9022
T	Justin Greenman/Sea Turtle POC	NOAA National Marine Fisheries Service	(707) 496-7230
T	/	Seal Beach National Wildlife Refuge	(562) 598-1024
T	/Spill Response Coordinator	US Fish and Wildlife Service, Federal T&E Species	(805) 644-1766
T	/7am-4pm	US Navy Environmental Office	(562) 626-7776
T	/after hours	US Navy Naval Weapons Station Seal Beach	(562) 626-7229

C – Cultural, Historic, Archaeological; E – Entry/Owner/Access; O – Other; S – Safety; T – Trustee; X – Exclusion or Security

Additional Site Summary Comments:

Concerns and Advice to Responders:

To protect endangered and sensitive species and wetland habitat. Responders should watch for and avoid nesting birds and minimize disturbances to vegetation. Avoid the spread of oil into the wetland through response activities.

Hazard and Restrictions:

The Navy may impose security restrictions in the event of a spill. This could effectively close off a portion of Anaheim Bay and deployment of the preferred strategies. Strategy 5-310.1 could be delayed until the Navy reopens this area to responders. If the Navy closes this area, alternative strategies 5-310.2 and 5-310.3 will have to be deployed. Watch weather and sea conditions.

Site Strategies:

Site Validation Level: III

Strategy: 5-310.1 Objective: Exclude Oil

Strategy: Use deflection boom to deflect oil.

Table of Response Resources

Equipment	Sub-Type	Size	Unit	QTY	Unit	Last Page Update
Boom	Harbor Boom	18 or 24 inch		1700	feet	<i>Strategy Updated:</i> 4/28/2023 <i>Last Test:</i> 9/19/2023
Anchor	Danforth	40 lbs		4		
Vessel	Boom Boat			1		
Vessel	Skiff			1		
Staff	Staff to Deploy			6		

Strategy: 5-310.2 Objective: Exclude Oil

Strategy: Use this strategy if the origin of the spill is offshore. Towed boom array using OSRO vessels and vessels of opportunity (each boom 600' to 800') as necessary.

Table of Response Resources

Equipment	Sub-Type	Size	Unit	QTY	Unit	Last Page Update
Boom	Ocean Boom	42 inch		1500	feet	
Vessel	Boom Boat			4		
Staff	Staff to Deploy			4		

Strategy: 5-310.3 Objective: Exclude Oil

Strategy: Use this strategy if the origin of the spill is from the secure area. Use a single stretch of 18" boom to line the inlets to Anaheim Bay. This strategy can also connect to 5-320.1.

Table of Response Resources

Equipment	Sub-Type	Size	Unit	QTY	Unit	Last Page Update
Boom	Harbor Boom	18 inch		1500	feet	<i>Strategy Updated:</i> 10/2/2023 <i>Last Test:</i> 10/2/2024
Anchor	Danforth	40 lbs		4		
Vessel	Boom Boat			2		
Vessel	Skiff or Punt			2		
Stakes				8		
Staff	Staff to Deploy			4		

Logistics:

Directions: Boat launches available in Huntington Harbour. From Bolsa Chica St. in Huntington Beach, go west on Edinger Ave. until it ends at Sunset Aquatic Marina. Additional launching at PCH and Warner Ave. (next to Huntington Beach Fire Station No. 7).

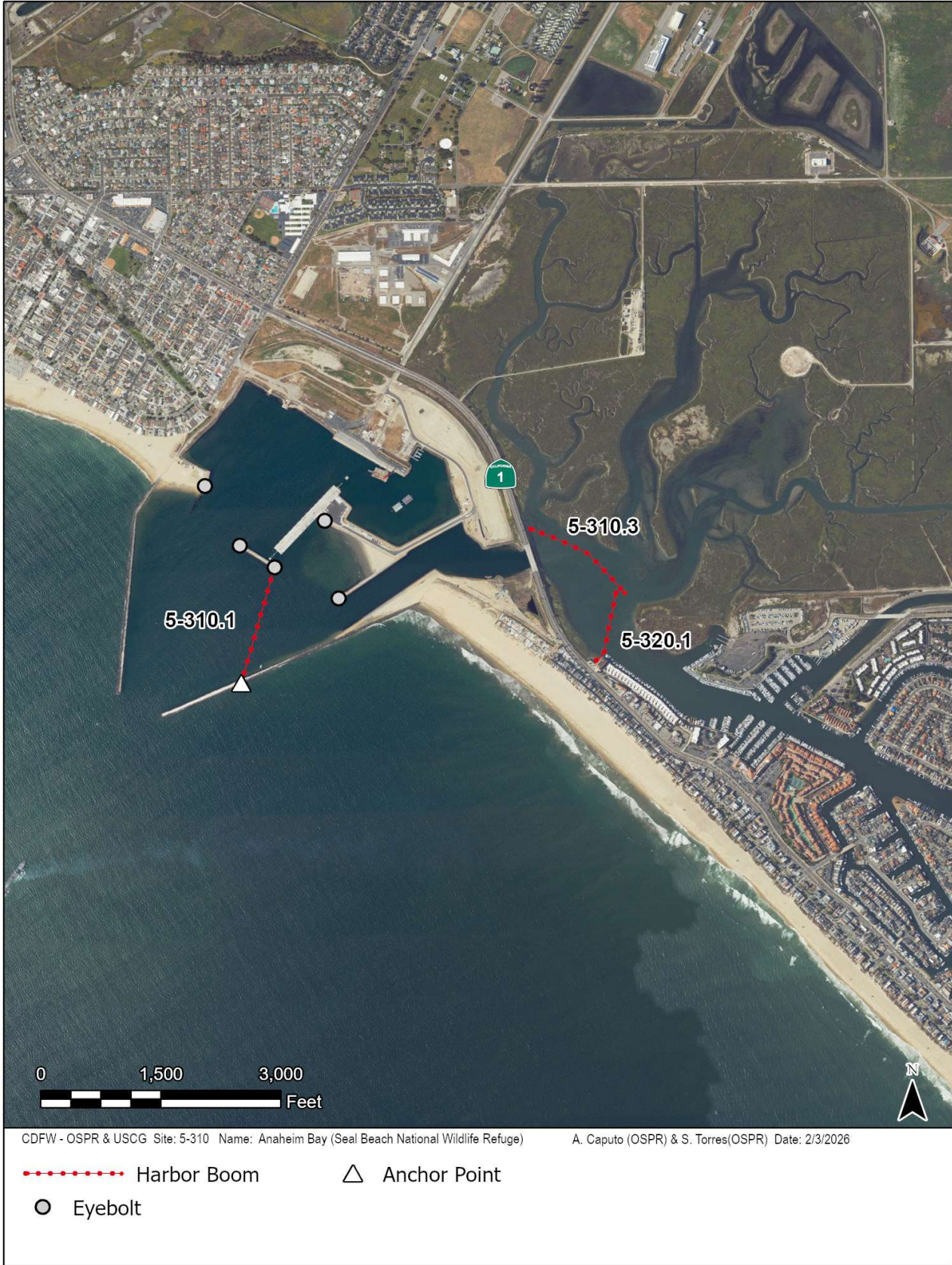
Land Access: Land access on the Seal Beach Naval Weapons Station (SBNWS).

On-Water Limitations: Shallow water and strong currents. Heavy small boat traffic. All services available.

Facilities, Staging Areas, Command Posts, Available Equipment: Both boat launch locations have adequate space for parking and staging.

Communications Problems: None

Additional Operational Comments: Primary boom placement is under the control of the SBNWS Commanding Officer.



CDFW - OSPR & USCG Site: 5-310 Name: Anaheim Bay (Seal Beach National Wildlife Refuge)

A. Caputo (OSPR) & S. Torres(OSPR) Date: 2/3/2026

- Harbor Boom
- △ Anchor Point
- Eyebolt