

6-250-A Site Summary - San Luis Rey River**6-250-A****County:** San Diego**ACP Division/Segment:** SD - C - S005 SD - C - S006**NOAA Chart:** 18758**Map Book:** 1085 J6**Decimal Degrees:** 33.20206 -117.39223**Site Description:**

At the mouth of the San Luis Rey River there is a +/- ten acre marsh and wetland habitat that is used by many species of wildlife. The site for booming or berming is at the river mouth immediately downstream of the Pacific Street Bridge. The site is dynamic and therefore subject to significant change due to tides, waves, and rainy weather. Any on-site protective deployment should address the existing site morphology and weather conditions forecasted for the duration of a response.

Resources at Risk:*ESI and Habitat:* 10A Salt - and brackish-water marshes

3A Fine- to medium-grained sand beaches

List of Resources at Risk:

	Resource Name	Status	Presence	Sensitivity
Birds	Western snowy plover	FT, SSC	Year-round	
Birds	California least tern	FE, SE	Feb - Sep	
Birds	Light-footed Ridgway's rail	FE, SE	Year-round	
Birds	least Bell's vireo	FE, SE	Mar - Sep	
Fish	tidewater goby	FE, SSC	Variable	
Plants	Nuttall's lotus	SR	Variable	
Plants	coast woolly-heads	SR	Variable	
Plants	San Diego marsh-elder	SR	Year-round	
Plants	San Diego ambrosia	FE	Year-round	

FT-Federally Threatened, FE-Federally Endangered, FP-Federally Protected, SE-State Endangered, ST-State Threatened, SP -State Protected, SR-State Rare, SSC-Species of Special Concern, BGEPA-Bald and Golden Eagle Protection Act, SSSP-State Special Status Species

List of Key Contacts:

Type	Name/Title	Organization	Phone
C	/Coordinator	Native American Heritage Commission	(916) 373-3710
C	/Coordinator	South Coastal Information Center	(619) 594-5682
T	/Spill Coordinator (24hr)	US Fish and Wildlife Service, Carlsbad Office	(760) 607-9768

C – Cultural, Historic, Archaeological; E – Entry/Owner/Access; O – Other; S – Safety; T – Trustee; X – Exclusion or Security

Additional Site Summary Comments:

Sediment accumulation at the river mouth has changed the site enough that the site strategies were modified in 2025.

Concerns and Advice to Responders:

Strategically Dynamic: Assess current site conditions before selecting a response strategy or ordering response equipment. A successful response at the San Luis Rey River will exclude oil from the estuary on an incoming tide by stopping oil movement with either an exclusion boom or with a berm installation, or both.

Hazard and Restrictions:

The river mouth is subject to flooding following severe storm incidents. Booming should not be attempted when the river stage is high or immediately following any significant rainfall in the watershed.

Site Strategies:**Site Validation Level: III****Strategy: 6-250.1 Objective:** Exclude Oil

Strategy: Deploy a two-tiered harbor boom set across the entrance channel using existing anchor points on the concrete wall and shoreline anchor points near the Pacific Street Bridge. This strategy assumes a high river flow where the river mouth is fully open.

Table of Response Resources

Equipment	Sub-Type	Size	Unit	QTY	Unit	Last Page Update
Boom	Harbor Boom			800	feet	<i>Strategy Updated:</i>
Vessel	Boom Boat or Skiff			1		<i>Last Test: 11/6/2024</i>
Staff	Staff to Deploy			4		
Staff	Staff to Tend			2		

Strategy: 6-250.2 Objective: Build Berm

Strategy: Construct a berm with sand bags filled with beach sand or use heavy equipment to construct a sand berm to close the river mouth to tidal exchange. Consider installing an underflow pipe.

Table of Response Resources

Equipment	Sub-Type	Size	Unit	QTY	Unit	Last Page Update
Sandbags				500		<i>Strategy Updated:</i>
Heavy Equipment	Front Loader			1		<i>Last Test: 4/19/2012</i>
Staff	Staff to Deploy			12		

Strategy: 6-250.3 Objective: Erect Filter Fence

Strategy: Construct a filter fence across the river mouth to prevent oil from entering the wetland on high tide. This strategy will only be successful when river flows are low.

Table of Response Resources

Equipment	Sub-Type	Size	Unit	QTY	Unit	Last Page Update
Fence	Fencing			200	feet	<i>Strategy Updated:</i>
Staff	Staff to Deploy			4		<i>Last Test: 11/19/2019</i>

Logistics:

Directions: Exit I-5 at Harbor Drive in Oceanside. Follow Harbor Drive toward the south side of the marina and west toward the beach. A public parking lot is located at the north side of the river mouth at the end of S. Harbor Drive.

Land Access: All access is available. Vehicular beach access is available off Pacific Street.

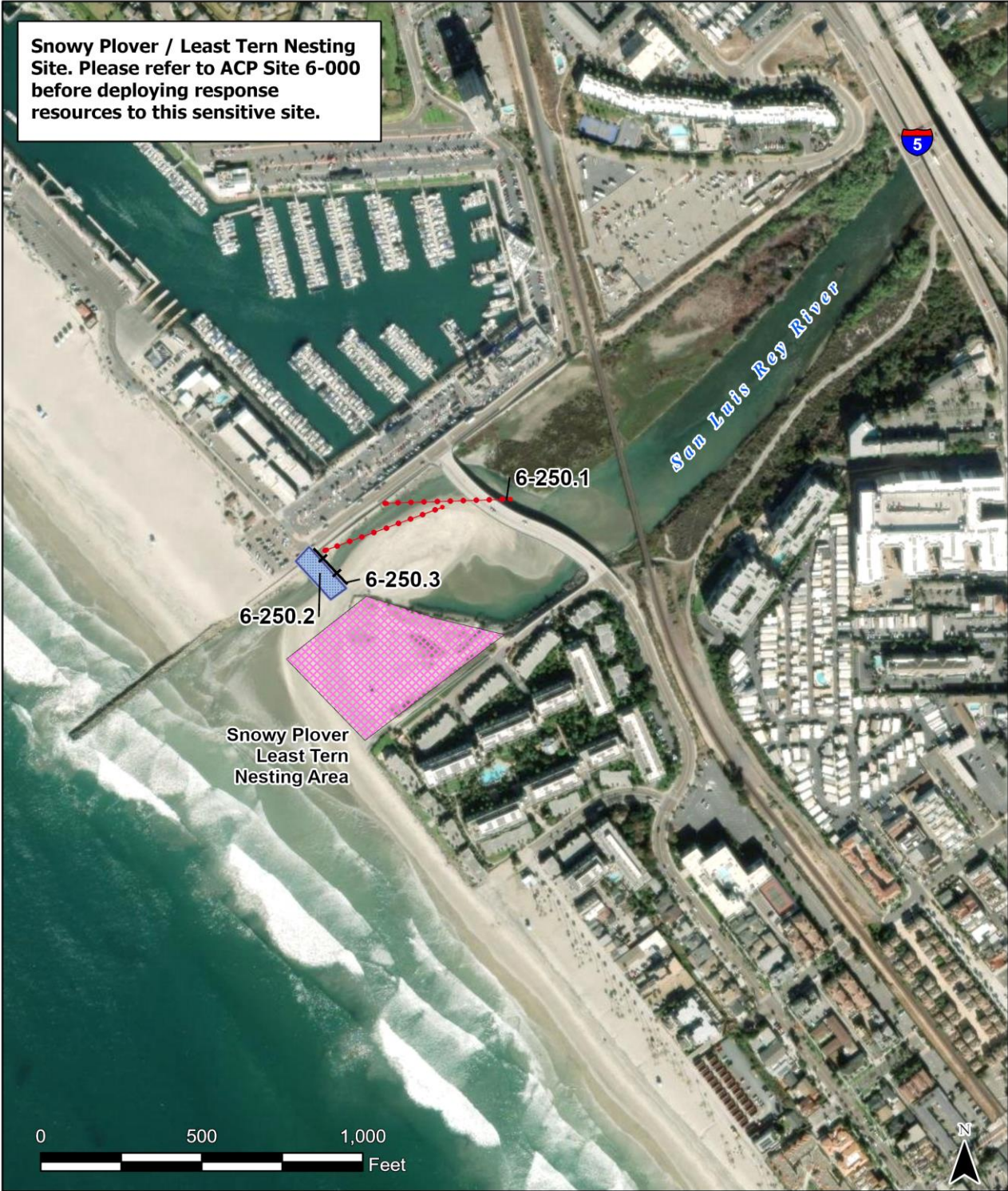
On-Water Limitations: Limited to hand launch skiffs with minimal draft.

Facilities, Staging Areas, Command Posts, Available Equipment: A staging area is available at the river mouth parking lot on the north side of the river crossing road.

Communications Problems: None.

Additional Operational Comments: Heavy equipment may be used to close the river mouth when endangered species are not present. Nesting sites may be vulnerable to all traffic (vehicular or foot). Consult a resource biologist prior to on-scene response actions during spring and summer months to avoid impacts to beach nesting birds.

Snowy Plover / Least Tern Nesting Site. Please refer to ACP Site 6-000 before deploying response resources to this sensitive site.



CDFW - OSPR & USCG Site: 6-250 Name: San Luis Rey River

A. Caputo (OSPR) & D. Lyons (OSPR) Date: 3/13/2025

- Harbor Boom
- +++++ Filter Fence
- Blue hatched box Dike or Berm
- Pink hatched box Nesting Area